




G O L D S P I R E





YOUR KEY TO UNLOCKING UNRIVALED PRESTIGE



An artful blend of modern
architecture where nature
serenades with urban delight

What is Goldspire?

Introducing “Goldspire,” where opulence meets elegance in every detail. Nestled within our esteemed residential community, Palm Olympia, Goldspire presents luxurious 4BHK + Lounge, 3BHK + Study apartments crafted to redefine upscale living. Here, sophistication intertwines with prestige, creating a distinctive address that epitomizes refined living. From exquisite design to unparalleled amenities, Goldspire elevates lifestyles to new heights.

Experience the epitome of luxury where every element reflects a commitment to excellence and an unparalleled dedication to enhancing your living experience. Welcome to Goldspire, where luxury becomes an everyday affair.



ARTISTIC IMPRESSION

A Grand Welcome Awaits



Entrance Lobby

ARTISTIC IMPRESSION

THE ABODE

Enter the World of Goldspire

Step into luxury at Goldspire, where the exclusive entrance sets the tone for an unparalleled living experience, combining elegance, security, and prestige. Every detail has been crafted to reflect Goldspire's commitment to elegance, setting the stage for exceptional living.





ARTISTIC IMPRESSION

TOWERS WITH EXPANSIVE VIEWS

In a preferred location, an aspirational and privileged lifestyle awaits, offering expansive, unobstructed views that seamlessly blend modern architecture with the serene beauty of nature.



The Goldspire is meticulously designed to offer breathtaking views. On one side, enjoy the serene expanse of lush greenery, providing a tranquil escape into nature. On the other, marvel at the stunning skyline and vibrant cityscape of Noida. This harmonious blend of natural beauty and urban sophistication makes the Goldspire an unparalleled haven of luxury, offering residents an exquisite lifestyle amidst diverse and captivating vistas.



*4 BHK + LOUNGE
3 BHK + STUDY
PREMIUM
APARTMENTS*



*A canvas of comfort
where love
paints its presence*





Bedroom

ARTISTIC IMPRESSION



Drawing & Dining

ARTISTIC IMPRESSION



ARTISTIC IMPRESSION

Kitchen



Balcony

ARTISTIC IMPRESSION



ARTISTIC IMPRESSION

Studyroom



Restroom



ARTISTIC IMPRESSION

SPECIFICATIONS AT A GLANCE

- Hot & cold split ac system is provided in all bedrooms
- Main door with video door phone and digital lock
- Wardrobes in all bedrooms
- Imported marble in the drawing and dining spaces
- Premium modular kitchen with quartz counter top
- Large format tiles
- Glass railing
- High-quality branded chinaware and cp fittings
- Vanity with imported marble counter top and wall mirror



CURATE YOUR
EXTRAORDINARY,
ONE EXQUISITE PIECE AT A TIME.

ARTISTIC IMPRESSION

RESERVED FOR YOU

Club Harmonie

Welcome to Club Harmonie, an exclusive haven for those who appreciate the finer things in life. Reserved for the discerning residents of Goldspire, the club embodies sophistication, ambition, and a refined lifestyle. Here, you will find like-minded individuals who value excellence and strive for greatness. With luxurious amenities, exquisite dining, and vibrant social gatherings, Club Harmonie is more than just a club—it's a community for those who live with passion and elegance.



Sports

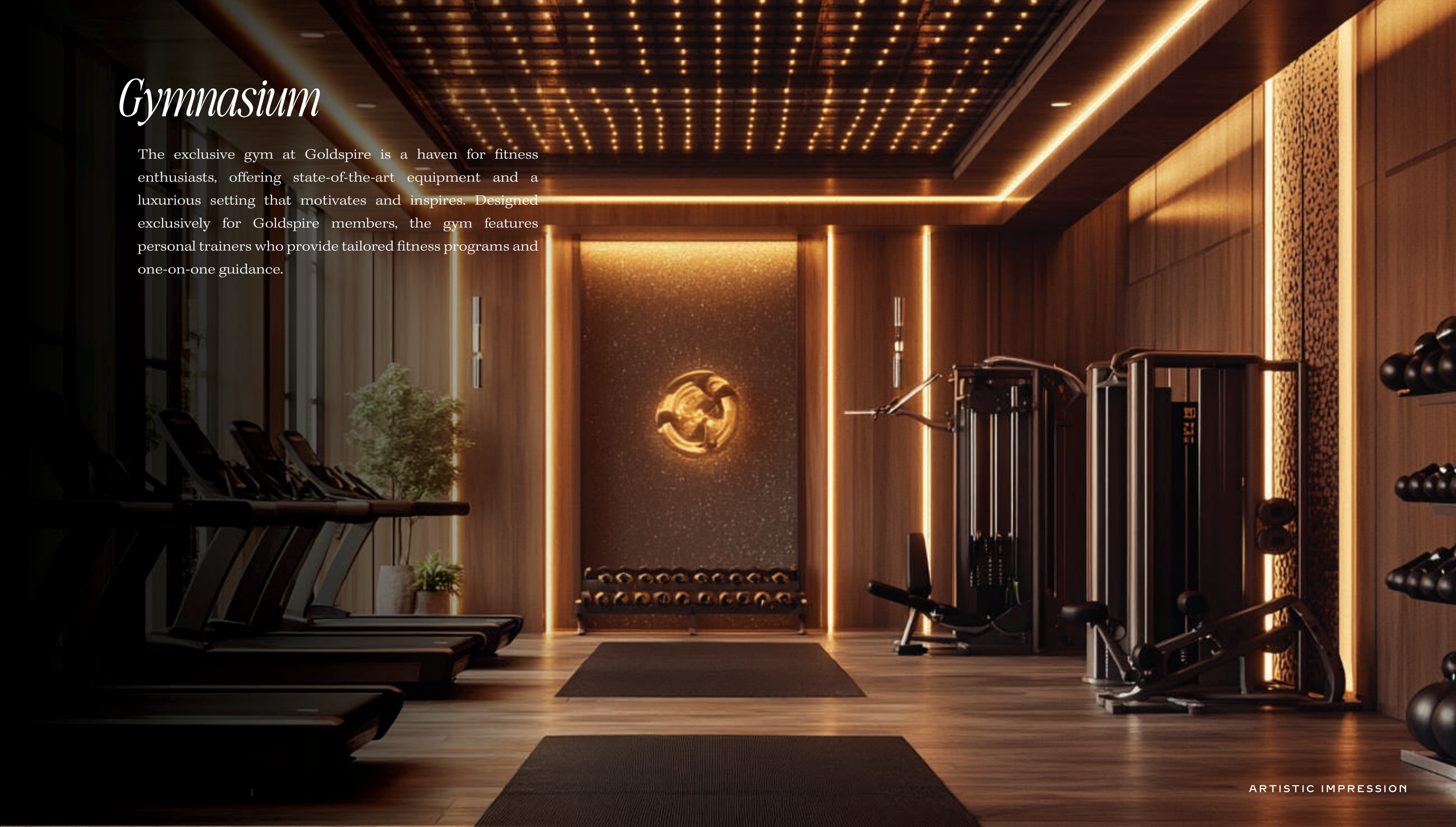
At Goldspire, residents enjoy exclusive access to a state-of-the-art indoor sports facility, designed for an active and fulfilling lifestyle. From thrilling basketball, badminton, to other exciting sports activities, the space is crafted to foster community engagement, fitness, and recreation—all in the comfort of your luxurious surroundings.



ARTISTIC IMPRESSION

Gymnasium

The exclusive gym at Goldspire is a haven for fitness enthusiasts, offering state-of-the-art equipment and a luxurious setting that motivates and inspires. Designed exclusively for Goldspire members, the gym features personal trainers who provide tailored fitness programs and one-on-one guidance.



ARTISTIC IMPRESSION

Cafe

Goldspire's exclusive café invites you on a global culinary journey, offering an exquisite selection of gastronomic delights. Indulge in a variety of international flavors without ever stepping out, savoring gourmet dishes crafted by master chefs. This vibrant yet intimate setting ensures an unparalleled dining experience, right at your doorstep.

ARTISTIC IMPRESSION

Kids Play Area

In our play area, every day is a new adventure waiting to unfold. Children can explore, imagine, and play in a safe and stimulating environment tailored just for them. With engaging activities, we ensure that the little ones are happy, active, and discovering joy at every turn.

ARTISTIC IMPRESSION

An
ADDRESS OF
DISTINCTION





ARTISTIC IMPRESSION

PALM OLYMPIA

Urban Serenity

Palm Olympia is a distinguished premium residential project, thoughtfully spread across an expansive 25 acres. This luxurious enclave boasts a vibrant hi-street within its vicinity, Palm Olymia, provides the residents with convenient access to a variety of upscale shopping, dining, and entertainment options. Palm Olympia is designed to offer a perfect blend of modern conveniences and natural beauty. With maximum green spaces, residents can enjoy a serene and refreshing atmosphere right at their doorstep.

A HOLISTIC LIFESTYLE

Centre Court Life

Nestled in the prime locale of Greater Noida (West), Palm Olympia extends a warm invitation to immerse yourself in the essence of Grand Centre Court Life. Delight in world-class sports facilities, all-access CLUB MERIDIAN, serene yoga sanctuaries, rejuvenating spa escapes, grand banquets, and sparkling swimming pools, offering a harmonious blend of relaxation and sophistication.

Welcome to a world of unparalleled living, divided into three exclusive zones. Grand Slam is where energy meets elegance – a hub for active lifestyles. The Sanctuary offers serene escapes, designed for tranquility and peace. Finally, Club Meridian stands at the heart of luxury and leisure, offering refined spaces for entertainment, relaxation, and premium amenities.



ARTISTIC IMPRESSION



Cricket



Lawn Tennis

WELCOME TO GRAND SLAM

Welcome to The Grand Slam, the ultimate destination for outdoor sports enthusiasts! Whether it's cricket, basketball, lawn tennis, or volleyball, our state-of-the-art facilities provide everything you need for a thrilling game. Surrounded by lush greenery, it's the perfect spot to elevate your sporting experience and enjoy an active, invigorating lifestyle.

Delight in world-class facilities



Lawn Tennis

Basketball Court

Volleyball Court

Net Cricket

Box Football

Skating



Basket Ball



Volley Ball

ARTISTIC IMPRESSION



ARTISTIC IMPRESSION

SPREAD OVER
45000
SQ.FT

...

ONE OF THE
BIGGEST CLUB IN
GREATER NOIDA
(WEST)



**CLUB
MERIDIAN**

RISE TO A NEW LIFE



Swimming Pool

ARTISTIC IMPRESSION



Gymnasium

ARTISTIC IMPRESSION



SPA

SPORTS HALL



MULTIPURPOSE SPORTS HALL

CHILDREN PLAYAREA



MINI THEATRE AND MUSIC LOUNGE



BUSINESS CENTRE

CO-WORKING SPACE



MULTI-CUISINE RESTAURANT

BANQUET HALL





ARTISTIC IMPRESSION

TAKE A MOMENT, PAUSE, BE STILL,
LET NATURE'S WONDERS SHAPE YOUR WILL.
IN ITS BEAUTY, VAST AND GRAND,
WE FIND OUR PLACE, WE UNDERSTAND.



THE SANCTUARY

A PARADISE OF PEACE & TRANQUILITY



Meditation Zone



Fragrance Garden



Yoga

ARTISTIC IMPRESSION



- Jogging & Walking Track
- Green Lawns
- Yoga Lawn
- Meditation Zone
- Celebration Plaza
- Fragrance Garden
- Pet Garden
- Reflexology Path
- Signature Seatings



ARTISTIC IMPRESSION

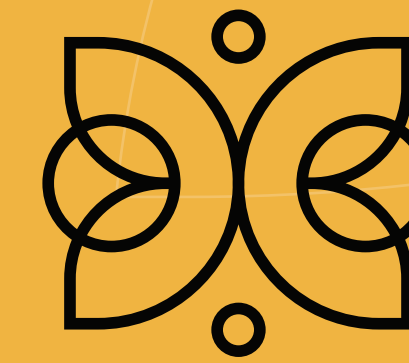
Harmonious Living

At the heart of Palm Olympia's development lies the innovative backbone of parametric design, ensuring an optimized and harmonious living environment. Our thoughtful layout allows for controlled vehicular flow, enhancing safety and tranquility throughout the community.

COMPREHENSIVE AMENITIES DESIGNED FOR A SEAMLESS
AND SECURE LIVING EXPERIENCE:

- ON-SITE NURSING HOME
- NURSERY SCHOOL AND CRECHE FOR EDUCATIONAL CONVENIENCE
- 24/7 SAFETY AND SECURITY
- HI-STREET RETAIL FOR EVERYDAY ESSENTIALS AND SHOPPING

The
CENTRE OF
OPPURTUNITIES



Palm Central
HI-STREET RETAIL



ARTISTIC IMPRESSION

PALM CENTRAL

Centre of Opportunities

Palm Central, a Hi-Street Retail at Palm Olympia, is strategically situated at the frontier of Taj Highway off NH9, placing you at the heart of convenience and comfort.

Palm Central is crafted to transform your business, enabling you to effectively grow your retail initiatives. It is more than a promising investment opportunity, an all-in-one retail destination, with the advantage of being part of a meticulous crafted community.

Palm Central occupants will benefit from high foot traffic and increased sales opportunities, all within the expansive 25-acre Palm Olympia Premium Development, offering easy access to a wealth of amenities and shopping facilities.





ARTISTIC IMPRESSION

PALM CENTRAL

Salient Features:

○ MAXIMUM VISIBILITY

Our ground-floor retail spaces, ranging from 100 to 1,000 square feet with 11-foot frontages, are meticulously designed for maximum visibility and tailored to diverse budgets. Thoughtful lighting enhances ambiance and product display.

○ PLANNING & DESIGN

Palm Central's modern design optimizes pedestrian flow, ensuring accessibility and convenience for residents and visitors. Thoughtfully planned pathways and amenities create a seamless community experience

○ GRAND HEIGHT ADVANTAGE

Palm Central's 4.5-meter floor-to-floor height offers a grand, spacious feel, enhancing comfort and luxury. Step in to experience a sense of openness and freedom.

○ LOW MAINTENANCE

Palm Central's state-of-the-art, energy-efficient facilities minimize operational costs, while durable, high-quality materials ensure low maintenance in common areas.

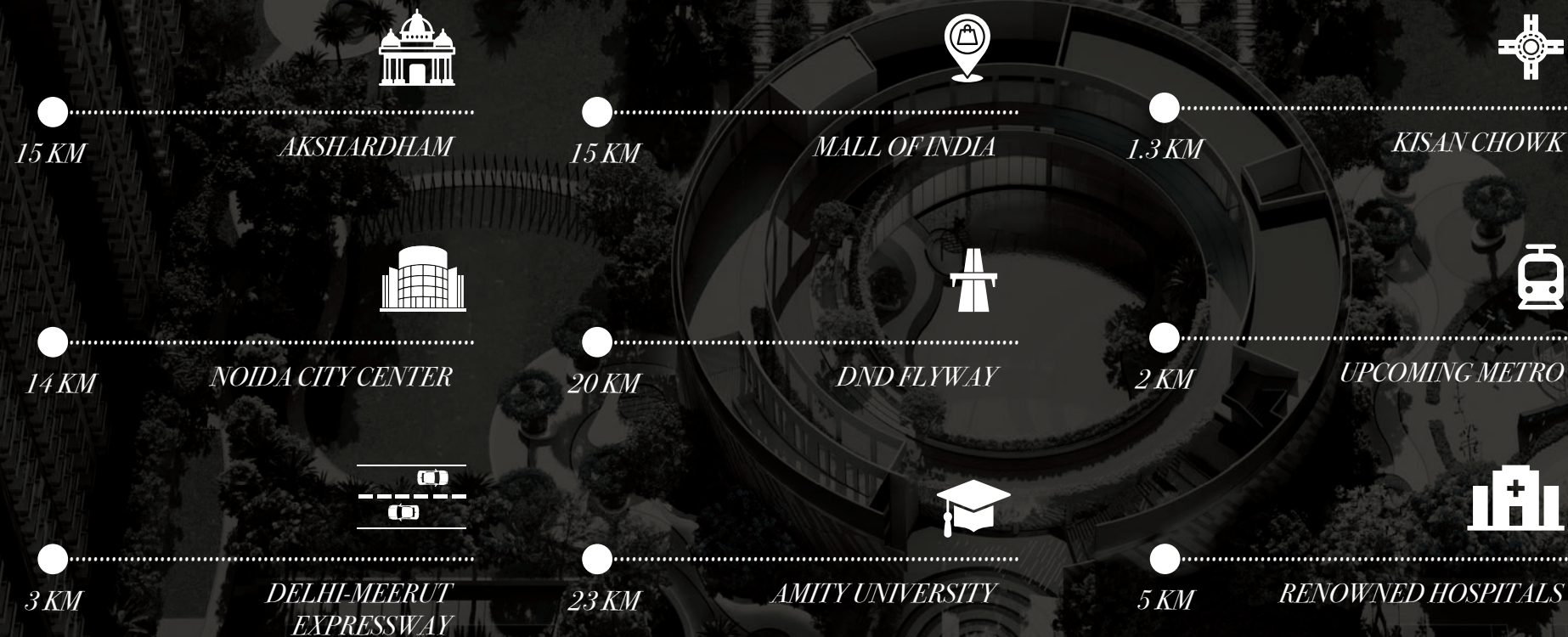
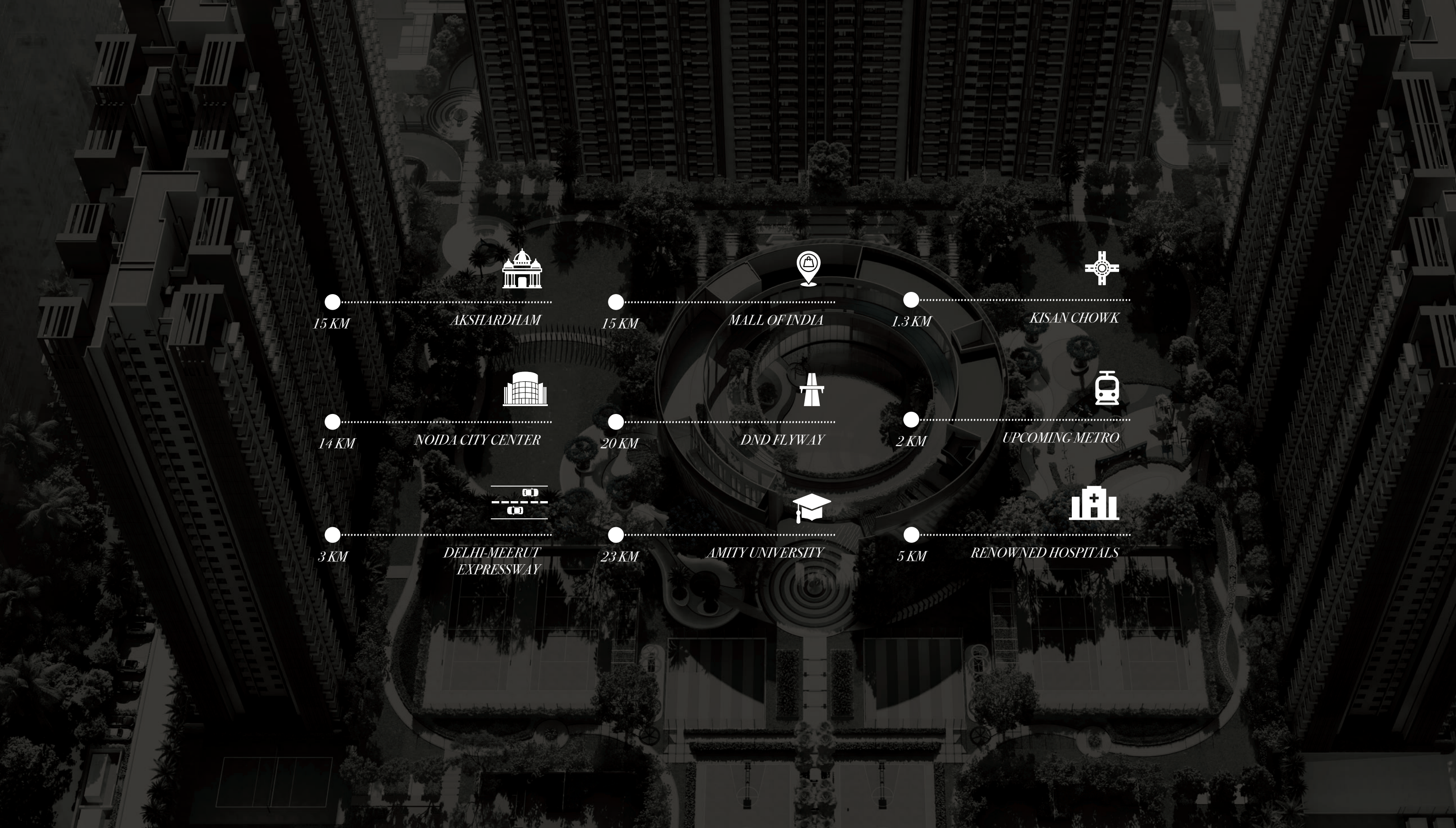
○ VASTU COMPLIANT

Vastu compliance at Palm Central ensures every space aligns with traditional Indian principles, creating a balanced, positive environment that promotes well-being and harmony.

THE GOLDEN RULE

LOCATION LOCATION LOCATION





PRIME LOCATION



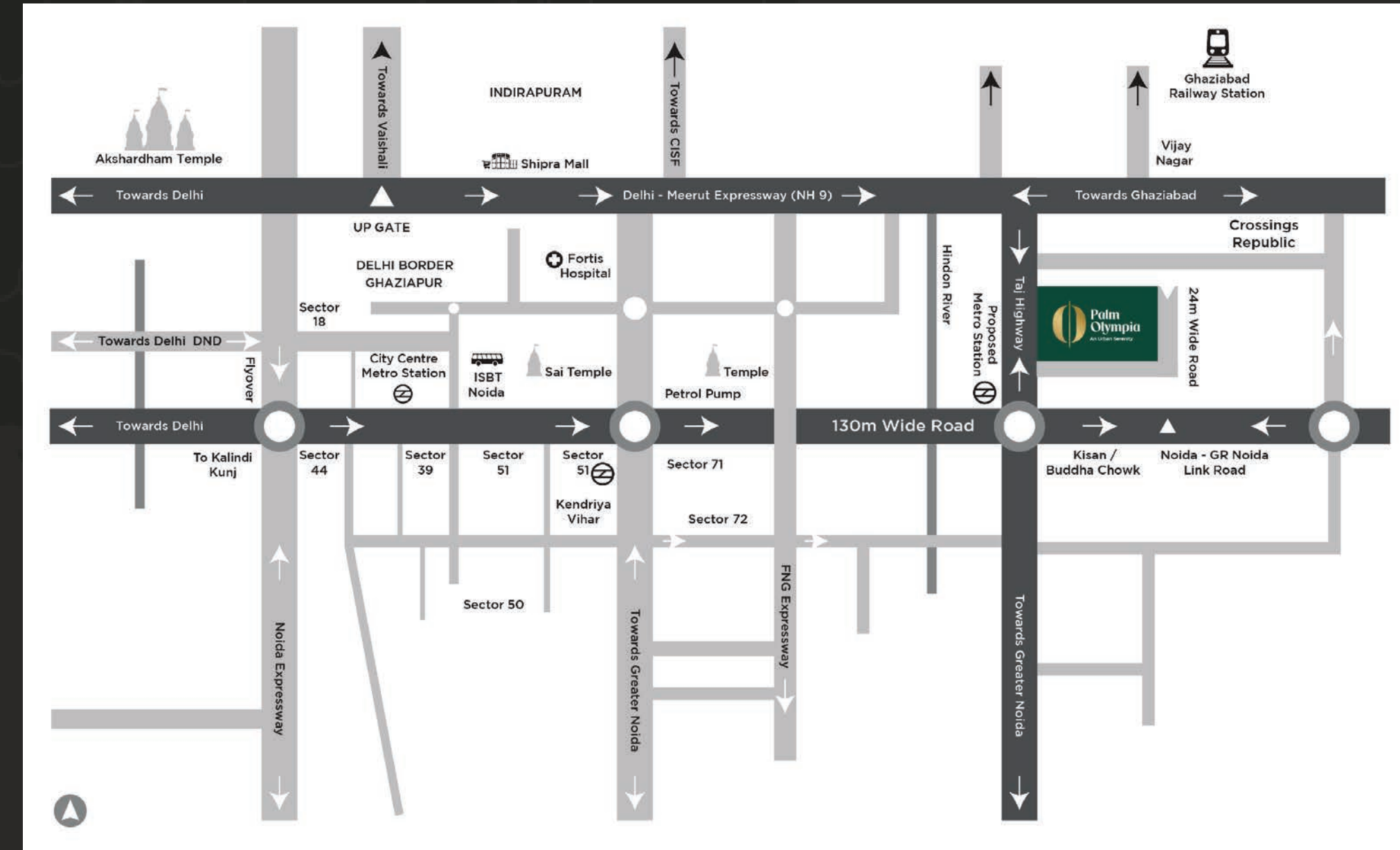
EXPERIENCE UNPARALLELED CONNECTIVITY TO PROMINENT RETAIL HUBS, EDUCATIONAL INSTITUTIONS, BUSTLING BUSINESS CENTERS, AND ESSENTIAL MEDICAL FACILITIES, FACILITATING UTMOST CONVENIENCE AND FOSTERING GREATER FAMILY BONDING OPPORTUNITIES.



LOCATED NEAR NH-9, THIS ADDRESS OFFERS EASY ACCESS TO ALL CONVENIENCES, LETTING YOU REACH YOUR FAVORITE SPOTS QUICKLY. 600 FT FRONTAGE ON TAJ HIGHWAY OFFERS GRAND VIEWS AND CLEAR VISIBILITY OF NH-9.

PROXIMITY TO HINDON AIRPORT, JEWAR AIRPORT, DELHI AKSHARDHAM, AND NOIDA EXPRESSWAY MAKES THIS PROJECT AN EXTRAORDINARY OPPORTUNITY.

SITE LOCATION

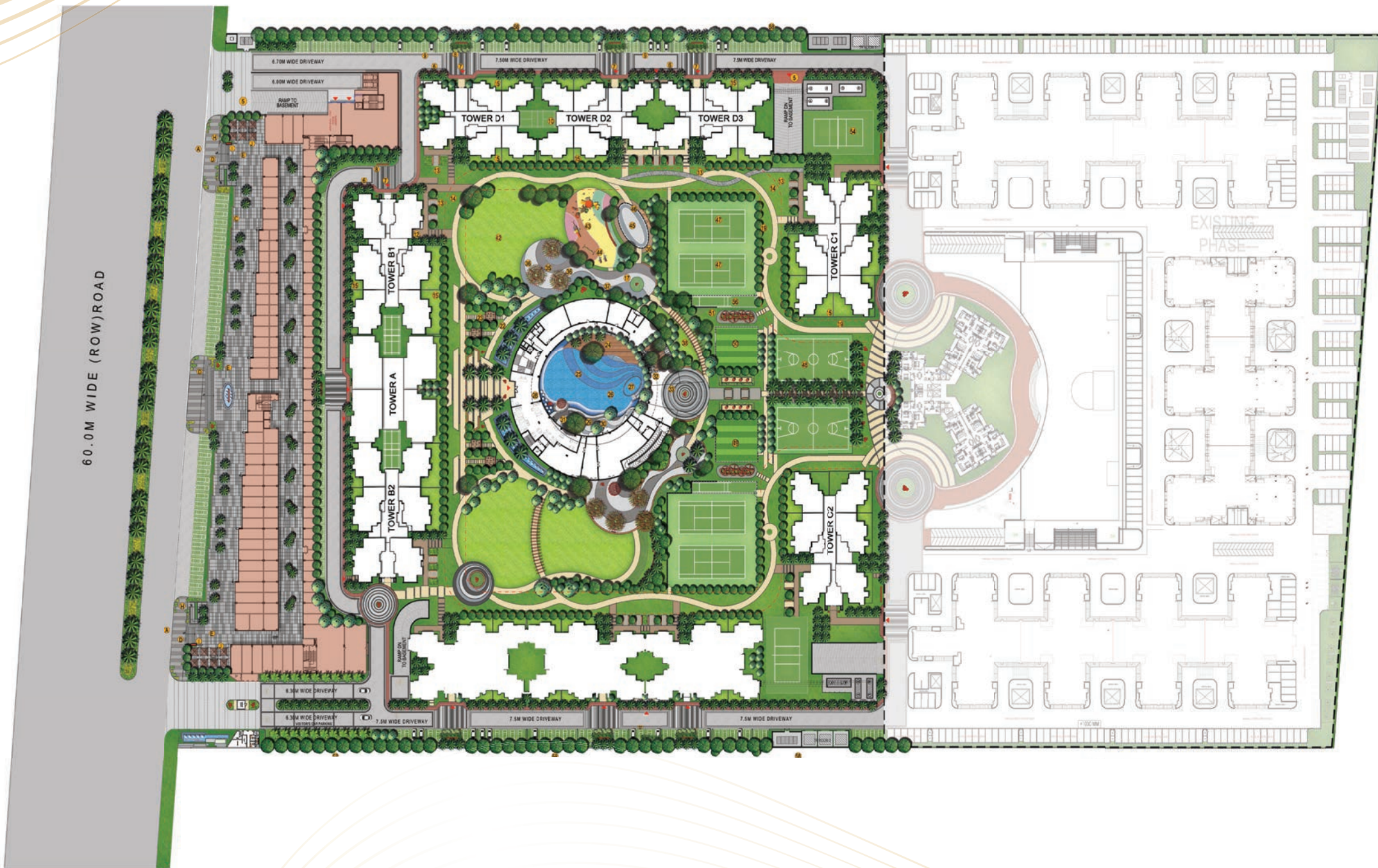


THE
GOLDSPIRE
LIFESTYLE RESIDENCES

PLANS

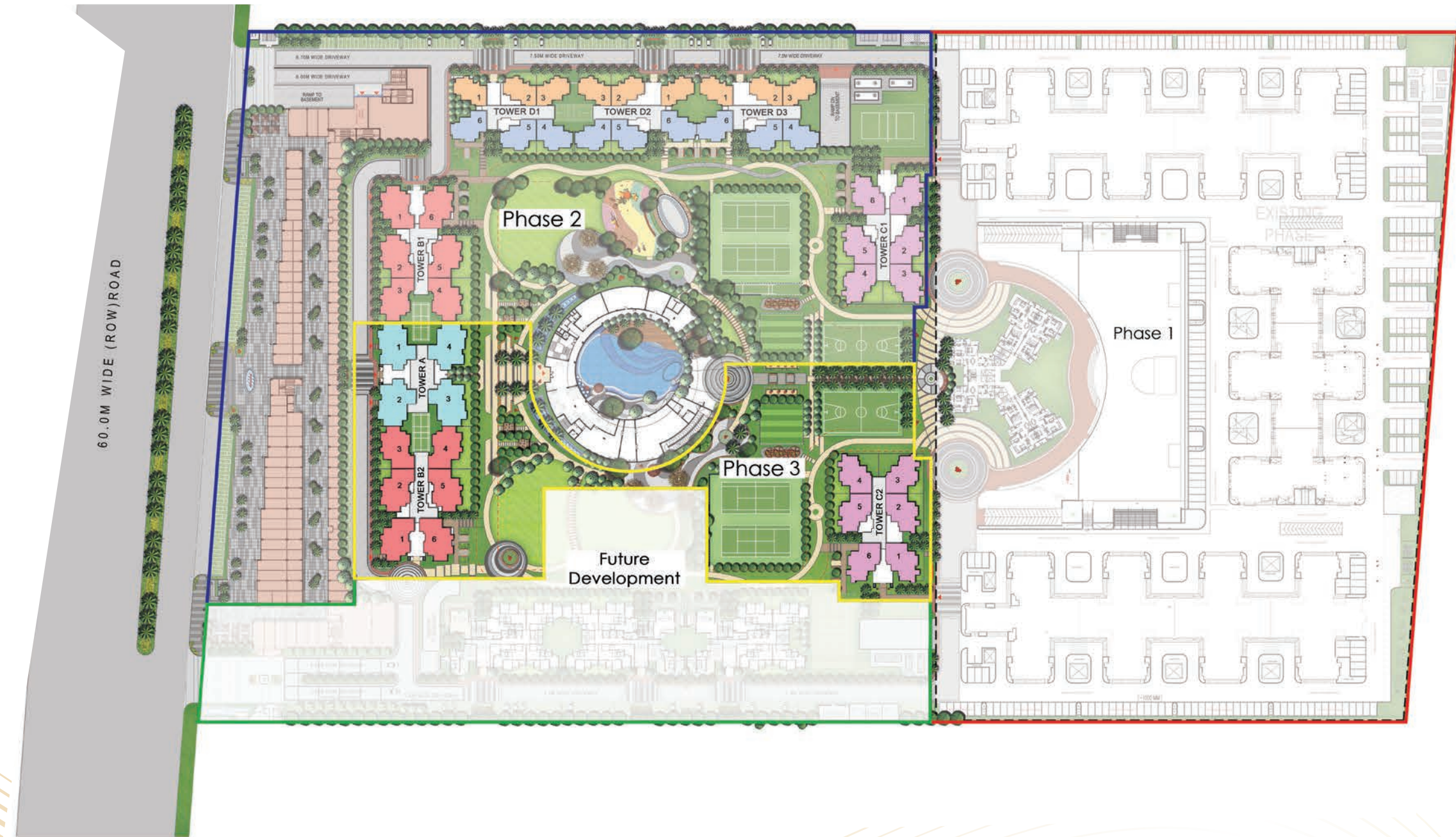


MASTER PLAN - PALM OLYMPIA



- LEGEND: LANDSCAPE ELEMENTS (RESIDENTIAL)
- 1 ARRIVAL COURT
 - 2 ENTRANCE GATE COMPLEX
 - 3 ENTRANCE WATER FEATURE
 - 4 PALM AVENUE WITH LINEAR WATER CASCADE
 - 5 RAMP TO BASEMENT PARKING
 - 6 PERIPHERAL JOGGING TRACK
 - 7 TOWER DROP-OFF
 - 8 TOWER DROP-OFF
 - 9 CAR PARKING
 - 10 BACKYARD COURT IN THE BASEMENT (2 NOS.)
 - 11 PLAY ACTIVITIES IN STEPS
 - 12 POPUP COURT, TABLE TENNIS, ETC.
 - 13 TOWER ENTRY FROM GREENS
 - 14 FRAGRANCE GARDEN WITH LINEAR SITTING
 - 15 YOGA LAWN
 - 16 APARTMENT PRIVATE GARDEN
 - 17 TRAFFIC ROTARY WITH ACCENT PAVING
 - 18 MOUND WITH SCULPTURE
 - 19 CIRCULAR PLAZA
 - 20 CENTRAL PARK (PATHWAY, JOGGING TRACK)
 - 21 CLUB ARRIVAL PLAZA
 - 22 CLUB WATER FEATURE
 - 23 REFLECTING POOL PATH
 - 24 POOL DECK
 - 25 MAIN SWIMMING POOL WITH INFINITY EDGE
 - 26 LAP LENGTHS (2 NOS.)
 - 27 KIDS POOL
 - 28 WATER FEATURE AT INFINITY EDGE
 - 29 PARTY DECK
 - 30 ELLIPTICAL SEATING WITH ORNAMENTAL TREES
 - 31 SUNBLENDED SITTING WITH METAL CANOPY
 - 32 OPEN AIR THEATRE
 - 33 CELEBRATION PLAZA
 - 34 BANQUET ENTRANCE CANOPY
 - 35 CURVILINEAR PLAZA
 - 36 METAL ARBOR WITH BOUGAINVILLEA
 - 37 CURVILINEAR SITTING
 - 38 TOWER TRAIL (POWERS)
 - 39 MOUND WITH DENSE PLANTATION
 - 40 BANQUET LAWN
 - 41 BANQUET FEATURE HALL
 - 42 MULTI-PURPOSE LAWN
 - 43 KIDS PLAY AREA
 - 44 OUTDOOR DRINK
 - 45 SKATING RINK
 - 46 SITTING UNDER TENSILE CANOPIES
 - 47 TENNIS COURTS (4 NOS.)
 - 48 BASKETBALL COURTS (2 NOS.)
 - 49 SOFT CRICKET
 - 50 SOFT FOOTBALL
 - 51 SITTING UNDER METAL CANOPIES
 - 52 FEATURE GREEK COLUMNS
 - 53 PATHWAY THRU PORTALS
 - 54 HOLLER BALL COURTS (2 NOS.)
 - 55 SITTING UNDER PERGOLA
 - 56 CRICKET NET PRACTICE (2 NOS.)
 - 57 PET GARDEN
 - 58 BOUNDARY PLANTATION

MASTER PLAN - PALM OLYMPIA - PH 2 & 3



PALM OLYMPIA PH 2

UPRERAPRJ308567
[HTTPS://UP-RERA.IN/PROJECTS](https://UP-RERA.IN/PROJECTS)

PALM OLYMPIA PH 3

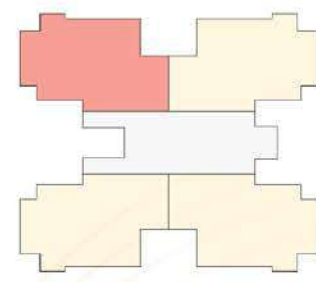
UPRERAPRJ409115/09/2024
[HTTPS://UP-RERA.IN/PROJECTS](https://UP-RERA.IN/PROJECTS)

TOWER A

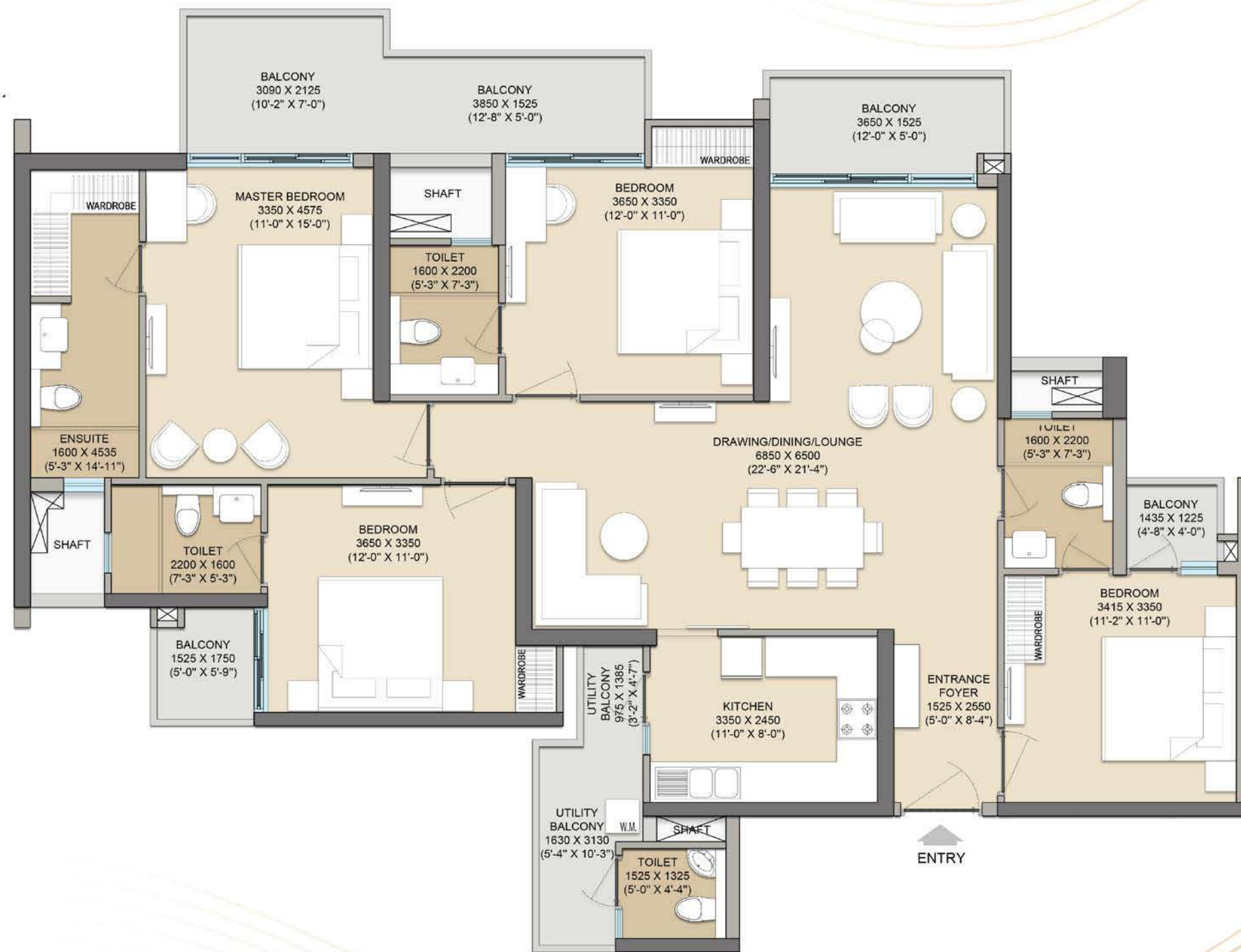
Unit Plan

4BHK+LOUNGE+5TOILET

Super Area: 2405 Sqft.
Carpet Area: 1361 Sqft.
Balcony Area: 296 Sqft.
Built-up Area: 1804 Sqft.



KEY PLAN

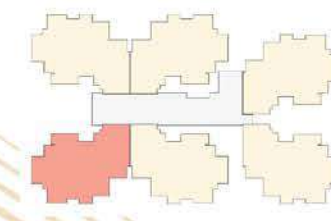


TOWER B1

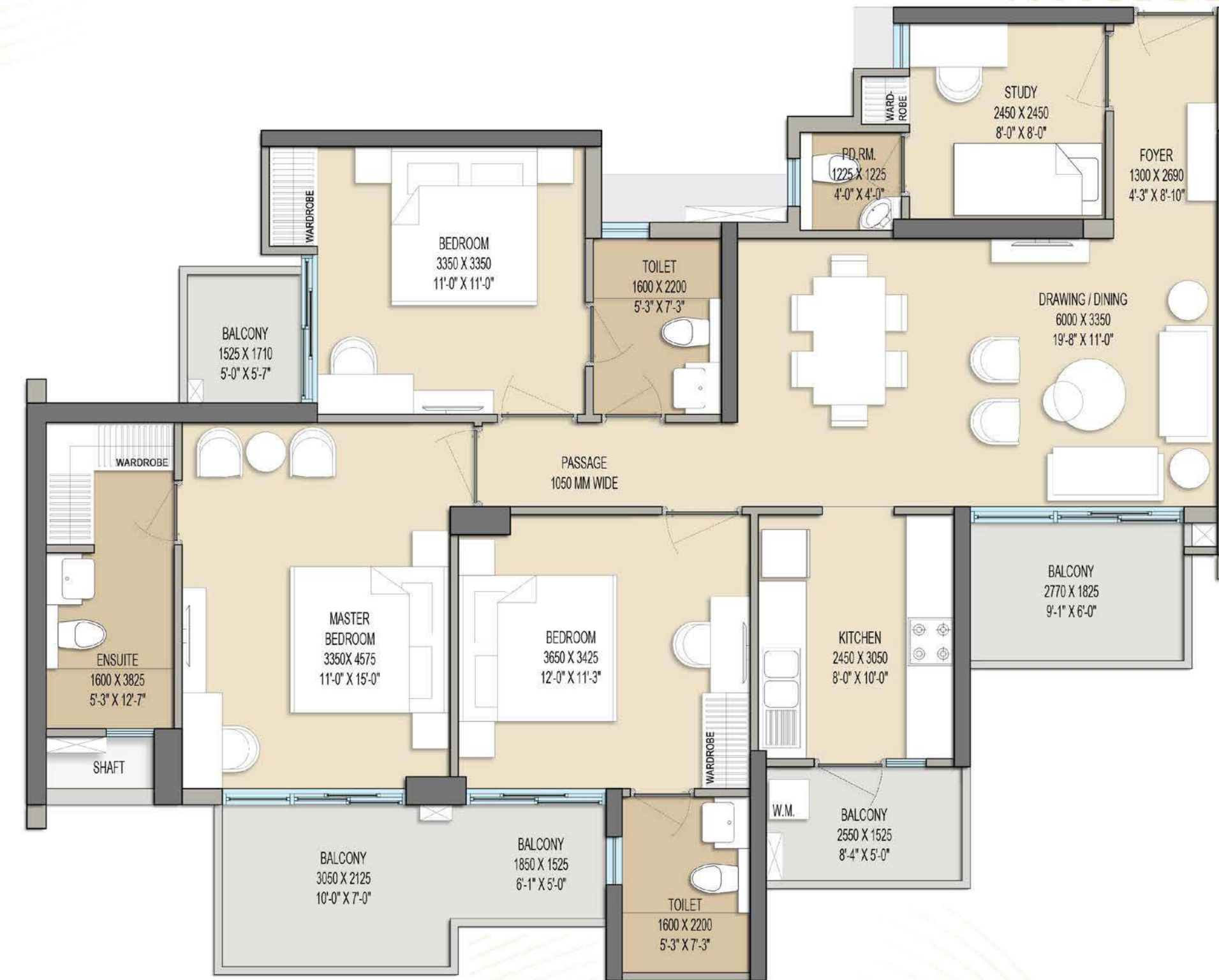
Unit Plan

3BHK+4TOILET+STUDY

Super Area: 1806 Sqft.
Carpet Area: 1073.80 Sqft.
Balcony Area: 224.47 Sqft.
Built-up Area: 1424.84 Sqft.



KEY PLAN



TOWER B2

Unit Plan

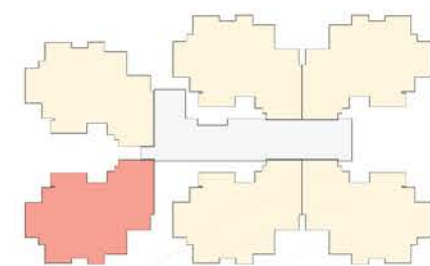
3BHK+4TOILET+STUDY

Super Area: 1806 Sqft.

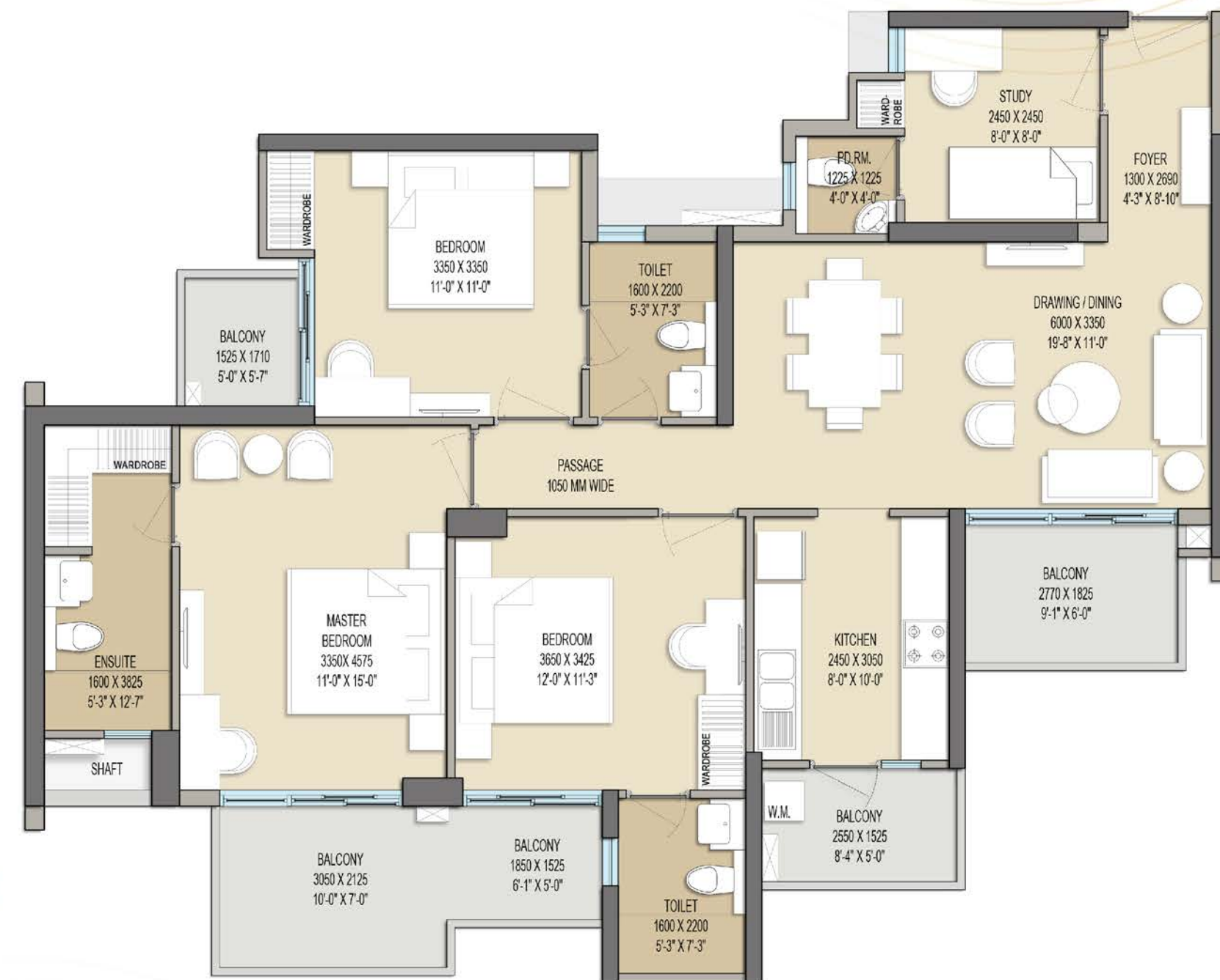
Carpet Area: 1075.3 Sqft.

Balcony Area: 224.47 Sqft.

Built-up Area: 1418.2 Sqft.



KEY PLAN



SPECIFICATIONS
FOR TOWER A, B1 & B2

AREA	FLOORING	CEILING	WALL	INTERNAL DOORS	EXTERNAL DOOR / WINDOWS / RAILINGS	WOODWORK	AIR CONDITIONING	PLUMBING FIXTURES	ADDITIONAL FEATURES
ENTRANCE FOYER	Imported marble Flooring	Ceiling Painted	P.O.P punning/ Putty finish with Acrylic emulsion Paint.	Main Entrance 8' (2400 mm) High. Both side Veener Polished flush Doors with hardwood door frame.	-	Door Handle & Lock - Dorset, Yale, Geze, Godrej or equivalent	-	-	Safety and Security: Main door to be provided with Digital Lock and Video Door Phone will be installed.
DRAWING + DINING	Imported marble Flooring	Ceiling Painted	P.O.P punning/ Putty finish with Acrylic emulsion Paint.	-	UPVC door Windows as Applicable	-	AC point along with Copper piping shall be provided.	-	-
MASTER BEDROOM	Large format Vitrified tiles flooring or Equivalent (min size 800mm x 800mm)	Ceiling Painted	P.O.P punning/ Putty finish with Acrylic emulsion Paint.	8' (2400 mm) high Laminated flush doors	UPVC door Windows as Applicable	Wardrobe is provided	Hot & cold split AC is provided	-	-
MASTER TOILET	Large vitrified Tiles flooring or Equivalent (min size 600mm x 600mm)	Grid false Ceiling	Designer vitrified Tiles along with Decorative panels Up till 8' height	8' (2400 mm) high Laminated flush doors	UPVC door Windows as Applicable	Vanity with imported Marble counter top With wall mirror	-	High quality, branded Chinaware and c.p. fittings. (Wall hung W.C., Diverter, Over the Counter W.B) Chinaware Brand - TOTO, Artize or equivalent	-
ALL OTHER BEDROOMS	Large format Vitrified tiles flooring or Equivalent (min size 800mm x 800mm)	Ceiling Painted	P.O.P punning/ Putty finish with Acrylic emulsion Paint.	8' (2400 mm) high Laminated flush doors	UPVC door Windows as Applicable	Wardrobe is provided	Hot & cold split AC is provided	-	-
ATTACHED TOILET	Large vitrified Tiles flooring or Equivalent (min size 600mm x 600mm)	Grid false Ceiling	Vitrified tiles Up till 8' height	8' (2400 mm) high Laminated flush doors	UPVC door Windows as Applicable	Vanity with imported Marble counter top With wall mirror	-	High quality, branded Chinaware and c.p. fittings. (Wall hung W.C., Diverter, Under the Counter W.B) Chinaware Brand - TOTO, Artize or equivalent	-
COMMON TOILET	Large vitrified Tiles flooring or Equivalent (min size 600mm x 600mm)	Grid false Ceiling	Vitrified tiles Up till 8' height	8' (2400 mm) high Laminated flush doors	UPVC door Windows as Applicable	Vanity with imported Marble counter top With wall mirror	-	High quality, branded Chinaware and c.p. fittings. (Wall hung W.C., Diverter, Under the Counter W.B) Chinaware Brand - TOTO, Artize or equivalent	-
KITCHEN	Large format Vitrified tiles flooring or Equivalent (min size 800mm x 800mm)	Ceiling Painted	Vitrified tiles above Counter (and below Space for overhead Cabinet), rest p.o.p Punning/ putty finish with acrylic emulsion	-	UPVC door Windows as Applicable	Premium modular Kitchen with quartz Counter top.	-	Stainless steel sink with drain board	Chimney + Hob will be provided
BALCONY	Wood textured Vitrified/ ceramic tiles	Ceiling Painted	Exterior grade Texture paint	-	Glass with SS railing	-	-	-	-
UTILITY BALCONY	Anti-skid vitrified/ Ceramic tiles	Ceiling Painted	Exterior grade Texture paint	-	Solid parapet Railing	-	-	Point for washing Machine	-

LIFT LOBBY & ENTRANCE LOBBY AT GROUND FLOOR					
LIFT LOBBY (GF.)	Imported Marble Flooring	Designer Decorative Ceiling as Per Interior Design	Imported European Furniture	Imported Designer Chandeliers and Lighting Fixtures	Aesthetically Designed Lift Car
ENTRANCE LOBBY (GF.)	Imported Marble Flooring	Designer Decorative Ceiling As Per Interior Design	Imported European Furniture	Imported Designer Chandeliers and Lighting Fixtures	Aesthetically Designed Lift Car

- OTHERS
1. **STRUCTURE** : Monolithic structure casted in aluminum formwork technology (like Mivan).
2. **LIFTS** : 3 Passenger Lifts & 1 Service Lift In all towers.
3. **ELECTRICAL FITTINGS AND FIXTURE (APARTMENT)** : Modular switches, Copper wiring, concealed PVC conduits, Light & Power points. Provision for TV, Telephone, Intercom points in living room and all bedrooms. Provision for single wifi point only.



TOWER C2

Unit Plan

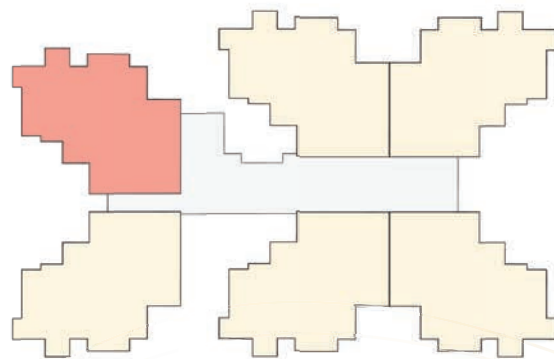
3BHK+3TOILET+UTILITY

Super Area: 1608 Sqft.

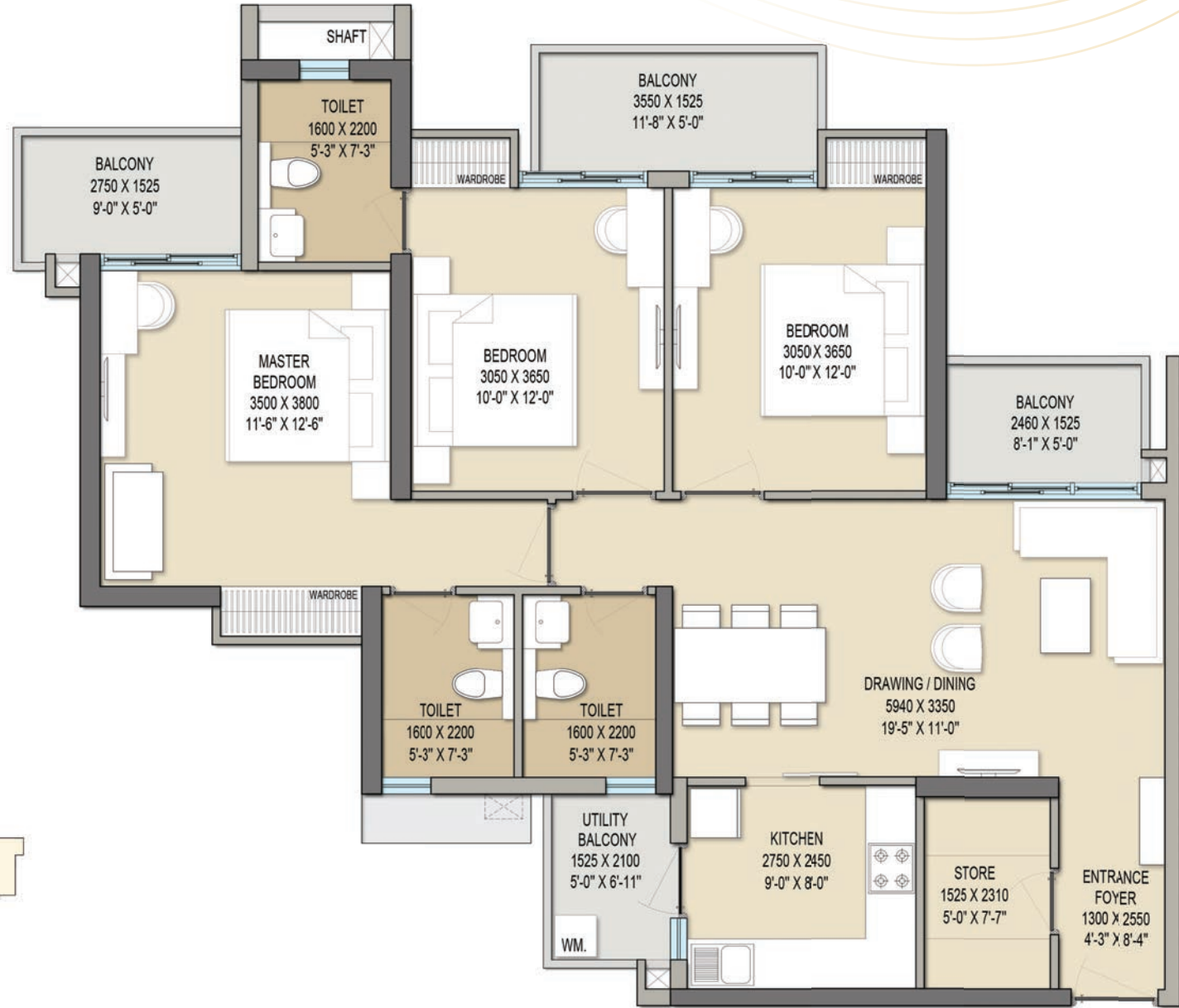
Carpet Area: 967.51 Sqft.

Balcony Area: 183.63 Sqft.

Built-up Area: 1257.67 Sqft.



KEY PLAN



UNIT PLAN

SPECIFICATIONS FOR TOWER C2

AREA	FLOORING	CEILING	WALL	INTERNAL DOORS	EXTERNAL DOOR / WINDOWS / RAILINGS	AIR CONDITIONING	SAFETY AND SECURITY	PLUMBING FIXTURES
ENTRANCE FOYER	Large Format vitrified Tiles or equivalent (minimum size 800*800mm)	Ceiling Painted	P.O.P punning/ Putty finish with Acrylic emulsion Paint.	Main Entrance Door 8' (2400 mm) High Both Side Veener Polished flush Doors with hardwood door frame; main door to be provided with DigitalLock	-	-	Main door to be provided with Digital Lock and Video Door phone will be installed	-
DRAWING + DINING	Large Format vitrified Tiles or equivalent (minimum size 800*800mm)	Ceiling Painted	P.O.P punning/ Putty finish with Acrylic emulsion Paint.	-	UPVC door Windows as Applicable	AC points along with drain and copper piping shall be provided	-	-
MASTER BEDROOM	Large Format vitrified Tiles or equivalent (minimum size 800*800mm)	Ceiling Painted	P.O.P punning/ Putty finish with Acrylic emulsion Paint.	7' 5' (2250 mm) High Laminated flush Doors	UPVC door Windows as Applicable	Air- Conditioner is provided	-	-
MASTER TOILET	Large Format vitrified Tiles or equivalent (minimum size 600*600 mm)	Grid false Ceiling	Vitrified tiles up till ceiling height & Polished granite on Counter	7' 5' (2250 mm) High Laminated flush Doors	UPVC door Windows as Applicable	-	-	High quality, branded Chinawareand C.P. fittings. (Wall hung W.C., Diverter, Over the Counter W.B) CP Fittings Brand: - Grohe/ Jaguar/Hindware or equivalent Chinaware Brand: -Kohler/ Vitra or equivalent
ALL OTHER BEDROOMS	Large Format vitrified Tiles or equivalent (minimum size 800*800mm)	Ceiling Painted	P.O.P punning/ Putty finish with Acrylic emulsion Paint.	7' 5' (2250 mm) High Laminated flush Doors	UPVC door Windows as Applicable	Air- Conditioner is provided	-	-
ATTACHED TOILET	Large Format vitrified Tiles or equivalent (minimum size 600*600 mm)	Grid false Ceiling	Vitrified tiles up till ceiling height & Polished granite on Counter	7' 5' (2250 mm) High Laminated flush Doors	UPVC door Windows as Applicable	-	-	High quality, branded Chinaware and C.P. fittings.(Wall hung W.C., Diverter, Over the Counter W.B) CP fittings Brand:- Grohe/ Jaguar/Hindware or equivalent Chinaware Brand:-Kohler/ Vitra or equivalent
COMMON TOILET	Large Format vitrified Tiles or equivalent (minimum size 600*600 mm)	Grid false Ceiling	Vitrified tiles up till ceiling height & Polished granite on Counter	7' 5' (2250 mm) High Laminated flush Doors	UPVC door Windows as Applicable	-	-	High quality, branded Chinaware and C.P. fittings. (Wall hung W.C., Diverter, Over the Counter W.B) CP Fittings Brand: - Grohe/ Jaguar/Hindware or equivalent Chinaware Brand: -Kohler/ Vitra or equivalent
KITCHEN	Large Format vitrified Tiles or equivalent (minimum size 800*800mm)	Ceiling Painted	Vitrified tiles Above Counter (Below space for overhead cabinet)	-	UPVC door Windows as Applicable	-	-	Stainless steel sink with drain board
BALCONY	Wood textured Vitrified/ Ceramic Tiles	Ceiling Painted	Exterior grade Texture paint	-	Glass with SS railing	-	-	-
UTILITY BALCONY	Anti-skid Vitrified Tiles	Ceiling Painted	Exterior grade Texture paint	-	Solid parapet Railing	-	-	Point for washing Machine

1. MAIN ENTRANCE LOBBY: Well Designed, Grand Entrance lobby with Imported stone flooring.

2. STRUCTURE: Monolithic structure casted in aluminum formwork technology (like Mivan)

3. LIFT LOBBY: Well designed, Aesthetic lobby with Full body tile flooring.

4. LIFTS: 3 Passenger Lifts & 1 Service Lift in all towers

5. ELECTRICAL FITTINGS AND FIXTURES(APARTMENT): Modular switches, copper wiring, concealed PVC conduits, Light & Power points. Provision for TV, Telephone, Intercom points in living room and all bedrooms. Provision for single Wi-Fi point only.

6. Modular Kitchen with Hob & Chimney.

7. Wardrobe in all Bedrooms.

TOWER C2 IS NOT A PART OF THE GOLDSPIRE

*Redefining
The landscape*

SAMINDIA

UNLOCKING VALUE. UNITED BY VALUES.

Beyond Structures, We Build Connections.

Unlocking Value. United by Values.

SAM INDIA, a distinguished name in the construction industry renowned for our unwavering commitment to excellence and reliability. Our journey, marked by steady growth and consistent quality, has earned us the trust and respect of our clients and the communities we serve.

Our vision is not just to develop projects but to build a better future for the nation. We are deeply invested in the growth of India, contributing to its development through innovative infrastructure projects that span across the country. Every project we undertake is a step towards unlocking value, driven by our unwavering values of integrity, excellence, and responsibility.

Delivered Projects

Aqua Line Metro Station

A Prestigious Project forming the backbone for a hassle free commuting experience between Noida & Greater Noida. Completed the project in the year 2019 & was honoured to be part of the growth story of Noida.

Palm Olympia - Phase 1

This will always remain closest to our hearts as a Residential Project. Delivered in the year 2016 we became the first in the vicinity and the structure stands tall to speak about our commitment towards quality delivery.

DMRC Staff Quarters Sector 50, Noida

A building which was constructed for our Metro Employees meets all the desired specifications of a Modern structure.

TATA Memorial Hospital, Mumbai

A building which is all emotions keeping in mind the purpose. Privileged and proud to be part.

Tyagraj Nagar CPWD

Our legacy of 30 years is a lot to boast about in regards to be contributing towards Nation building. Delivered in a timely manner, the CPWD building stands magnificent.

Delhi Technological University (DTU, Rohini)

An Abode of Education working relentlessly towards churning out Notable Alumni for the country SAMINDIA takes pride in joining hands with the PWD in construction.



DMRC HOUSING FLATS



TATA MEMORIAL HOSPITAL



Ongoing Projects

Member of Parliament Flats

Located in the Hub of Connaught Place New Delhi, this prestigious Project will have apartments for the Honourable Members Of Parliament. Made with all modern amenities & technology MP Flats would be another feather in the Cap of SAMINDIA.

Palm Olympia - Phase 2 & 3

Post delivery of Phase 1, it was always a dream of SAMINDIA to come up with something extraordinary & premium group housing which would give the opportunity to the Resident to experience a sublime blend of Aesthetics, Innovation & Practicality.

PNB Data Centre, Gurgaon

Government work has always been our priority as it enables us to be part in Nation building. Hence the Data Centre will be built using the latest technology making it an absolute Modern Building.

Mumbai Metro Project

Metro Depot and station building, spreading in 36 Acre, built in Aarye Colony Mumbai. This depot is having facility of heavy- wash, auto-wash, pit-wheel laps and underpasses etc. This project is completed in very compressed time limit of 22 months.

SENIOR MANAGEMENT

The entire team of SamIndia & Palm Olympia, led by Mr. Madan Lal, Mr. Vipul Garg and Mr. Sachin Garg, is dedicated to a customer first approach.

With extensive experience in Social Infrastructure Development, Civil Construction the group is relentlessly working towards Nation Building.

The Extended team comes with rich experience in various fields on the lines of:

- QUALITY
- CIVIL CONSTRUCTION
- SAFETY
- MARKETING
- CUSTOMER RELATIONSHIP MANAGEMENT



MR. MADAN LAL



MR. VIPUL GARG



MR. SACHIN GARG

Design Team

ARCHITECTS

Confluence Consultancy services

Palm Olympia is a ground breaking project redefining housing in Greater Noida (West). A landmark project conceived from a fine collaboration of hard-work and imminent stakeholders involved in designing this beauty.

Confluence Consultancy Services is known to celebrate sustainability and aesthetics in every endeavour. Our goal has always been to create spaces that are inclusive, seamless and natural. Palm Olympia is a reflection of this philosophy and has been designed to seamlessly blend with nature and life.

We are committed to deliver world-class awe-inspiring designs.

VISHAL SHARMA Founder & Principal



INTERIOR DESIGNER



BM&A is proud to be associated with Sam India Group for their project 'Palm Olympia'. We take conceit in being the only Indian firm common to eminent hospitality brands like The Starwood Hotels and Resorts, Marriott International, The Hyatt Hotels, The Taj Palaces and Resorts, The Lalit Group of Hotels etc.

The Club House design at Palm Olympia is sublime blend of Aesthetics, Innovation and Practicality. It has rich flavours of classic design with contemporary approach resulting in a futuristic design that is elegant and timeless.

We are confident that our expertise of providing international design experience will appeal to the discerning customers of Palm Olympia.

BOBBY MUKHERJI Founder & Principal

PALM OLYMPIA PH 2



UPRERAPRJ308567
[HTTPS://UP-RERA.IN/PROJECTS](https://UP-RERA.IN/PROJECTS)

PALM OLYMPIA PH 2 : COLLECTION A/C DETAILS: SIAH COLLECTION A/C FOR PALM OLYMPIA PH2,
ACCOUNT NO: 50200076773572. IFSC: HDFC0005212, HDFC BANK, GAUR CITY 1, GREATER NOIDA (WEST)

PROMOTER: SAMINDIA ABHIMANYU HOUSING
PROMOTER REGISTRATION NO.: UPRERAPRM236650

PALM OLYMPIA PH 3



UPRERAPRJ409115/09/2024
[HTTPS://UP-RERA.IN/PROJECTS](https://UP-RERA.IN/PROJECTS)

PALM OLYMPIA PH 3 : COLLECTION A/C DETAILS: SIAH COLLECTION A/C FOR PALM OLYMPIA PH3, ACCOUNT NO:
50200098429272. IFSC: HDFC0005212, HDFC BANK, GAUR CITY 1, GREATER NOIDA (WEST)

DISCLAIMER

The Promoter Sam India Abhimanyu Housing is developing the Projects Palm Olympia Ph 2 (UPRERA Registration no UPRERAPRJ308567) and Palm Olympia PH 3 (UPRERA Registration No UPRERAPRJ409115/09/2024). The images, appearances, colours, etc. given herein are mere artistic impression for representation purposes only and do not constitute an offer an invitation to offer and/or commitment of any nature between the promoter and the recipient. The data/information herein is intended to give a general understanding of the subject matter and is subject to change without any prior notice. Readers are therefore requested to verify all details, including area, amenities, services, terms of sale and payment schedule and other relevant terms independently with the promoter prior to arriving at any decision of buying any apartments / spaces in the said project. The binding offering shall be governed by the terms and conditions of the Agreement for Sale only. In no event will the Promoter be liable for any claim made by the reader including seeking any cancellation and/or withdrawal for any of the Inaccuracies in the Information provided in the advertisement, though all the efforts have been made to ensure accuracy. We also do not hold any responsibility for any Information provided by any broker/ channel partner/property dealer or made available on any website/email communication other than official website/email/correspondence. [1 acre= 0.405 Hectare, 1 sq.mt. = 10.764 sq. ft., 1 sq. mt=1.196 sq. yd.]



SITE ADDRESS: GH-02, SECTOR - 16C, GREATER NOIDA (WEST) / WWW.PALMOLYMPIA.COM

